

Inclusion Centre Management

We partner with schools to provide a fully managed, integrated Inclusion Centre within your school to prevent exclusions and facilitate high quality learning outcomes for your most disengaged students.



Belief

Courage

Growth

About Us

Think for the Future is a social enterprise that partners with schools to deliver structured provisions which are proven to have a positive and measurable impact on engagement with learning.

We work with over **180+ schools and multi-academy trusts** across the UK and are expanding into new areas every day.

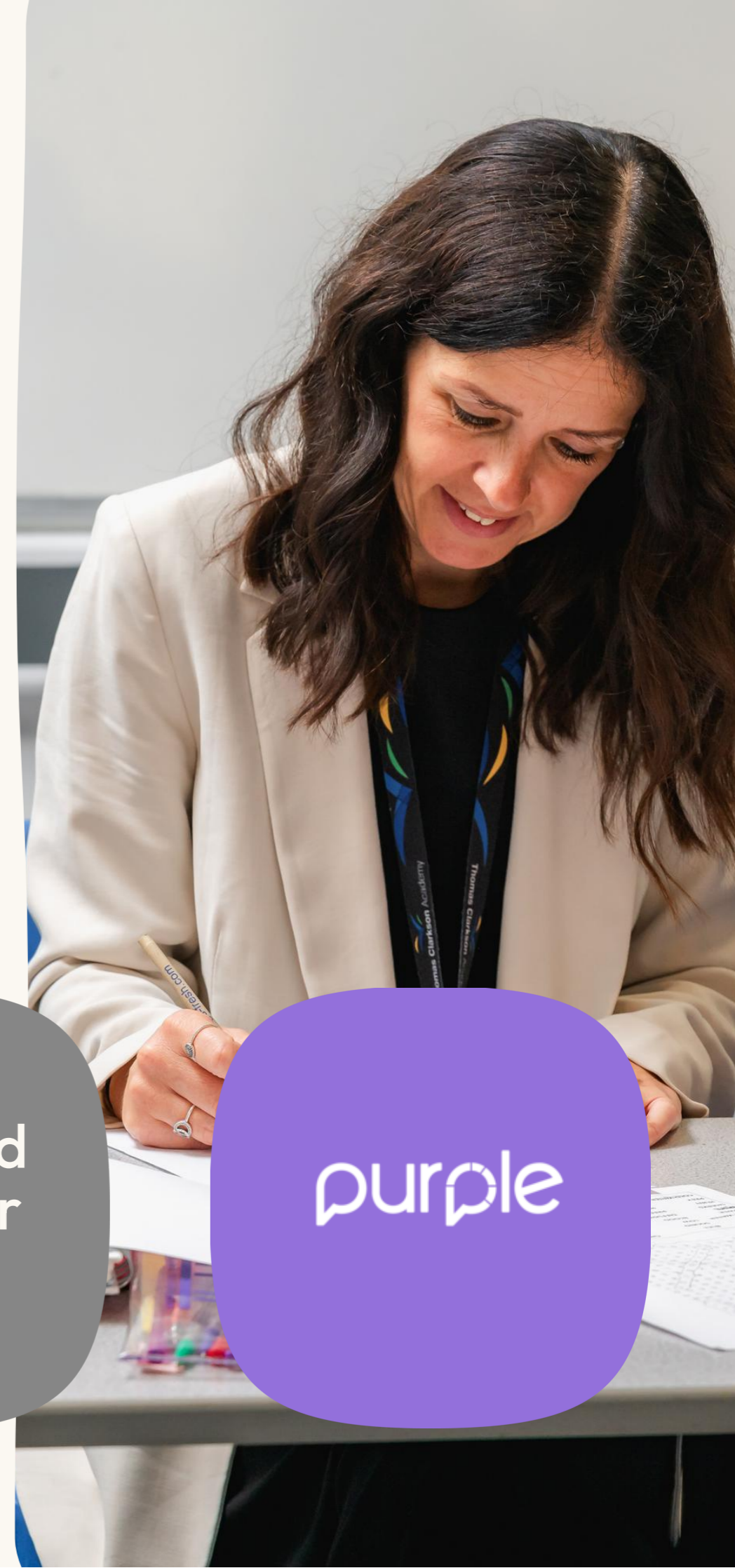
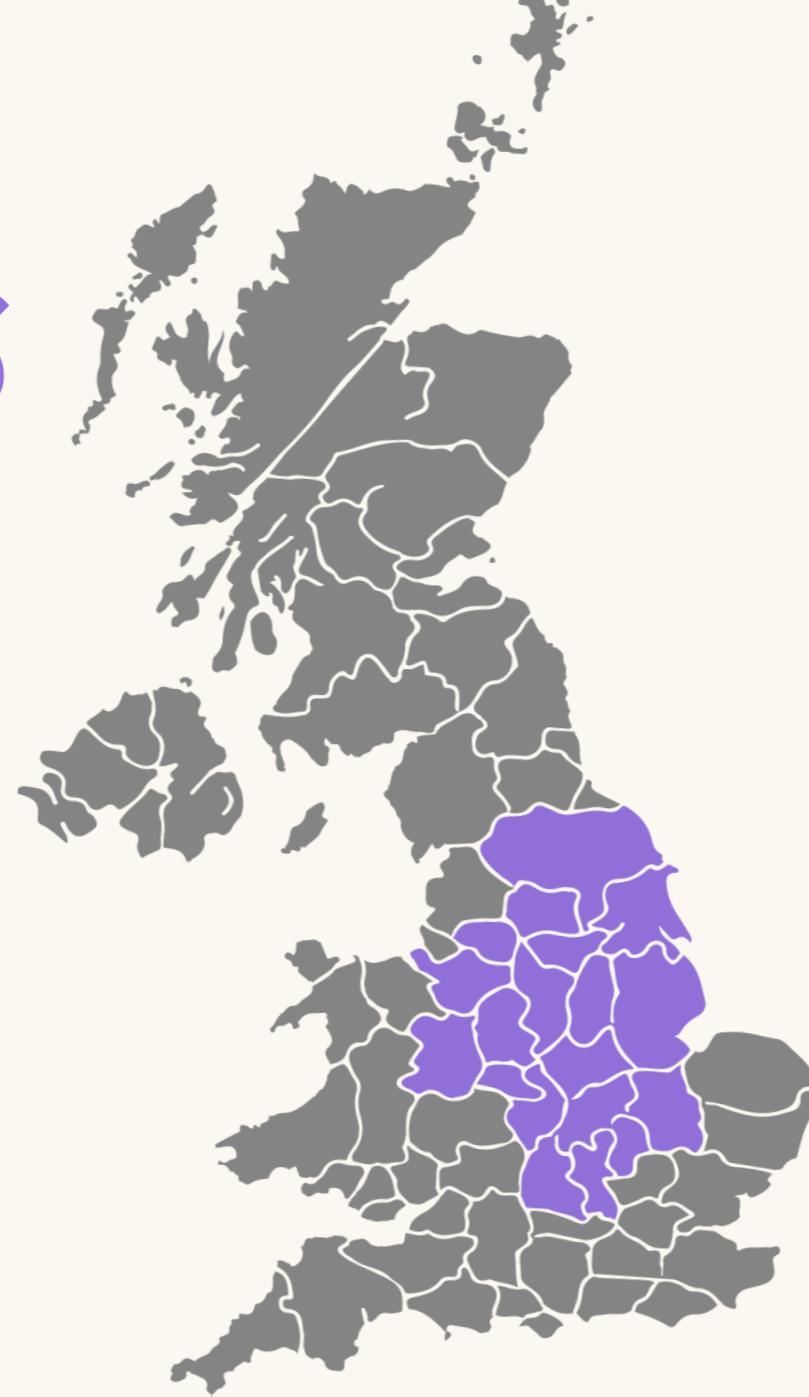
We operate four core services:

Behaviour &
Resilience
Mentoring

Inclusion
Centre
Provision

Integrated
Behaviour
Hubs

purple



Inclusion Centre Management Provision

Overview:

Our Inclusion Centre Management Provision provides a fully-managed, adjusted learning environment within a mainstream partner school. We work with high-risk young people to prevent the use of permanent exclusion and alternative provision placements.

Our objective:

To ensure the students receive a highly successful educational experience leading to high quality outcomes for each individual, saving significant time and cost for our schools.

Dedicated and skilled Inclusion Centre Staff

Comprehensive Inclusion Centre Blueprint

High quality social and emotional learning curriculum

Tailored support for teaching and learning

Why partner with us?

We recognise that each school has unique needs, and we collaborate closely with your team to understand your specific context. We partner with a wide range of schools who work with us to achieve a number of different outcomes including:



Preventing exclusions, alternative provision placements and associated costs



Establishing a high quality inclusive learning environment for your most challenging students



Reducing pressures of negative behaviour across your school



Saving your SLT and staff time by benefitting from a fully-managed service





School Testimonials

"Our Think for the Future provision is incredibly important to us because inclusion is at the heart of everything we do. We are serving the needs of every student and in some cases these needs cannot be met without additional support, often additional pastoral support, as a significant proportion have challenges in their own lives for which organisations like TFTF can help us to overcome."

Richard Scott

Executive Principal, Thomas Clarkson Academy

The Think for the Future Service



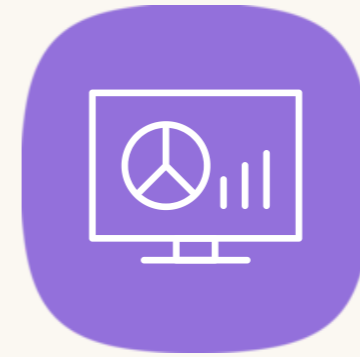
Staffing & Ongoing Management

- TFTF staffing allocated to the centre
- Ongoing centre daily management and oversight
- Effective problem solving
- Staff allocation & replacement
- Comprehensive quality assurance
- Long-term cover



Centre Strategy

- Strategic leadership
- KPI Setting
- Monitoring behaviour & attendance
- Working with teaching staff to deliver adapted learning
- Continuous development
- Solution finding & implementation



Impact Monitoring & Reporting

- Impact monitoring and reporting
- Cost benefit analysis
- KPI tracking
- Data analysis
- Detailed and insightful reporting



Partnership

- Open & responsive communication
- Solution-focussed approach
- Feedback driven development
- Regular progress reviews

Dedicated & Skilled Inclusion Centre Staff



We position a fully trained and managed team within your school to run the Inclusion Centre

TFTF Inclusion Centre Manager

Responsibilities include:

Day-to-day management of centre operations

Oversight of staff and students

Close collaboration with school staff team

Effective communication with parents

TFTF Inclusion Centre Mentors

Responsibilities include:

Cultivating a positive culture

Addressing behaviour concerns

Classroom support

Delivering exceptional student mentoring

Provision Structures

Our Centres operate on a 1:5 ratio

1

10 - 15 Students

TFTF Manager

TFTF Mentor

TFTF Mentor

2

15 - 20 Students

TFTF Manager

TFTF Deputy Manager

TFTF Mentor

TFTF Mentor

3

20-25 Students

TFTF Manager

TFTF Deputy Manager

TFTF Mentor

TFTF Mentor

TFTF Mentor

Student Voice

"I feel happy being part of the TFTF programme because when I started in school I was very nervous and I used to get in a lot of fights but when I started going to TFTF sessions I learnt new skills and ways to cope and I stopped being in trouble as much. I thank TFTF because if I didn't go to TFTF I would not have been behaving well and I'm thankful for what they taught me"

Year 8 Student
Sheffield

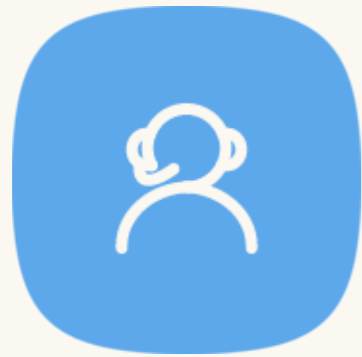
"The TFTF programme has helped me set little goals that will help me in the future. TFTF has taught me skills for school life and also things that I can use later on in life. I feel like the programme gives students like me that push they need to succeed"

Year 9 Student
Birmingham

"My mentor has helped me to understand other people's perspectives and it has also taught me to keep going to achieve things like goals and to not give up when school is tough because it will pay off in the future. It has also taught me how much doing well in school can have an impact on later life with future jobs and your life. Overall the mentoring has made me realise a lot more about myself."

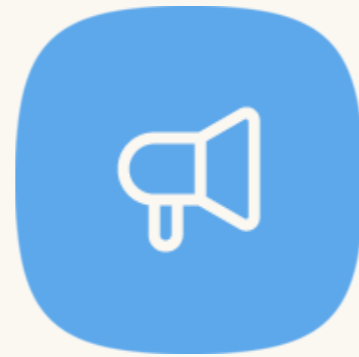
Year 10 Student
Northampton

Management Structures



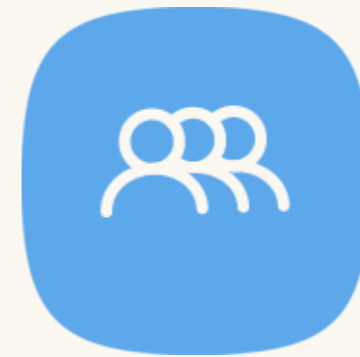
Supportive Management Structure

The provision is supported by our Executive Management team who work with the onsite team and your school to ensure the provision is as effective as possible. This includes frequent visits, weekly meetings, consistent communication and responsive feedback.



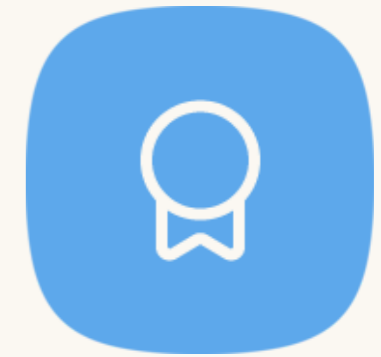
Recruitment & Training

We have extensive recruitment processes and explore both internal and external candidates to build the perfect centre team. We invest heavily in our bespoke training programme where all staff receive initial and ongoing training on key areas including behaviour management and centre operations.



Line Management

The TFTF team takes care of all line management responsibilities for the Centre team. We are committed to fostering a supportive team culture and ensuring the well-being of each team member.

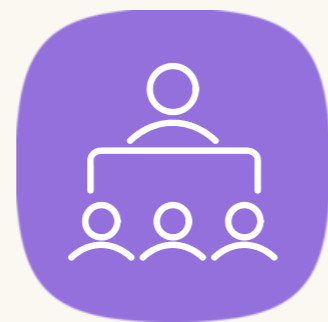


Staff Development & Quality Assurance

We assure the quality of your Centre team through robust quality assurance processes. This includes observations, one-on-one feedback sessions, and regular team development meetings. Additionally, we provide ongoing training and facilitate the sharing of best practices among our Inclusion Centres.

Tailored Support for Teaching and Learning

We believe in giving students the best opportunity for academic success.



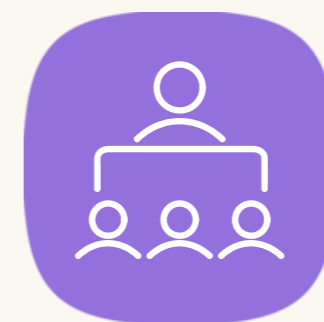
KS3 & KS4

The provision would include both a KS3 and a KS4 cohort who attend the Centre together, but are taught in separate classes



5-13 Students

Each key stage cohort could include between 5 and 13 students, depending on overall provision size.



Combined Year Groups

Key stages will combine years groups into single classes. TFTF can offer a detailed package of support for curriculum planning and teaching in this adapted structure.



TFTF Team Support

The TFTF Team are positioned to support all lessons through managing behaviour, regulating students or deployed within the classroom to support teaching.

Example Timetables

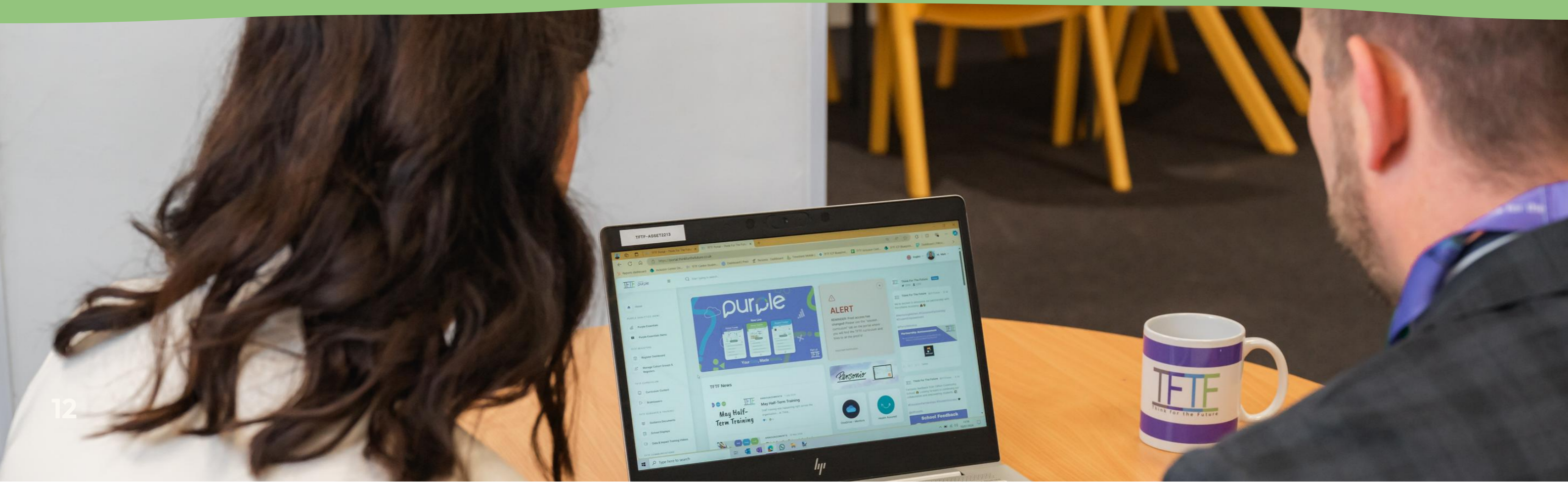
Teaching is provided by subject specialists with 80% of student timetables comprising of taught lessons

	Monday	Tuesday	Weds	Thursday	Friday
Form	TFTF Form	TFTF Form	TFTF Form	TFTF Form	TFTF Form
Period 1	TFTF	Hums	Core	Core	Core
R+R	R+R	R+R	R+R	R+R	R+R
Period 2	Core	Core	Art/D+T	Core	Art/D+T
Break	TFTF Social Club	TFTF Social Club	TFTF Social Club	TFTF Social Club	TFTF Social Club
R+R	R+R	R+R	R+R	R+R	R+R
Period 3	Core	IT/Comp	TFTF	IT/Comp	Core
Period 4	Core	Core	Hums	Core	Lang
Lunch	TFTF Social Club	TFTF Social Club	TFTF Social Club	TFTF Social Club	TFTF Social Club
R+R	R+R	R+R	R+R	R+R	R+R
Period 5	PE	TFTF	PE	TFTF	TFTF

	Monday	Tuesday	Weds	Thursday	Friday
Form	TFTF Form	TFTF Form	TFTF Form	TFTF Form	TFTF Form
Period 1	TFTF	Option 2	Core	Core	Core
R+R	R+R	R+R	R+R	R+R	R+R
Period 2	Core	Core	Option 2	Core	Option 2
Break	TFTF Social Club	TFTF Social Club	TFTF Social Club	TFTF Social Club	TFTF Social Club
R+R	R+R	R+R	R+R	R+R	R+R
Period 3	Core	Option 3	Core	Option 1	Core
Period 4	Core	Core	Option 3	Core	PE
Lunch	TFTF Social Club	TFTF Social Club	TFTF Social Club	TFTF Social Club	TFTF Social Club
R+R	R+R	R+R	R+R	R+R	R+R
Period 5	Option 1	TFTF	Option 1	TFTF	TFTF

Comprehensive Centre Blueprint

We operate an extensively tested Centre Blueprint which forms the structure of our operations to ensure consistency and high quality throughout



Please see below the key features of our Centre Blueprint. Each element below has extensive policies and procedures that our centres follow and what each centre and staff member is quality assured against. These are the key ingredients to success and what contribute to our successful outcomes for our schools.

Further details on the below can be shared upon request.



purple

Our Essentials Plan for 3 users is included in your TFTF Provision

Purple is a powerful school data analytics tool created in-house here at Think for the Future. It empowers you to easily track behaviour, attendance and more at your school.

Purple enables you to analyse whole school trends, measure the progress of specific groups (including those accessing your TFTF Inclusion Centre Provision) and dive into a student's individual profile.

1



Data connection

Purple seamlessly plugs into your existing MIS data system with the help of Wonde

2



Live data feed

We receive a live feed of student data, specifically focussing on: Behaviour points, Attendance and Suspensions

3



Data analysis

Purple analyses the data for you, dynamically adjusting the student's attendance, as well as benchmarking against the rest of the year group

4



Dashboards

We provide you with live data dashboards, enabling you to empower your leaders with the data they need

Registration Groups	Attendance Rating	Behaviour Rating	Achievement Rating	Suspension Incidents Rating
6WIK	Not Improved	Not Improved	No Change	Improved
6OTG	Not Improved	Not Improved	No Change	Improved
6PMK	Not Improved	Improved	No Change	Improved
6QOQ	Not Improved	Improved	No Change	Improved
6REH	Not Improved	Improved	No Change	Not Improved
6SLQ	Not Improved	No Change	No Change	Improved
80	No Change	Improved	Not Improved	Improved
CCGT	No Change	No Change	Not Improved	Not Improved
LRDI	No Change	Not Improved	Not Improved	Not Improved
NAEI	Not Improved	No Change	No Change	Improved
PLFJ	No Change	Not Improved	No Change	Not Improved
VFDL	Not Improved	No Change	Improved	Not Improved
VOJO	No Change	Not Improved	Not Improved	Not Improved
VTOF	No Change	No Change	Improved	Not Improved
WVEO	Not Improved	Not Improved	No Change	Not Improved
ZUGH	No Change	Not Improved	Improved	Not Improved

Search: Aaron B - 21, Aaron B - 50, Aaron F - 10, Aaron F - VTOF

Provision: All, Group Owner: All, Group: All, Groups Status: All, Student Status: All

Pupil Premium: No, SEN Category: M

Group Details: Mon S2 - Y8 ... Active, Group Name: Purple Person, Group Owner: Purple Person

Reason	Session	Date
Illness Not Medical or dental appointment	AM	15/05/2024
Illness Not Medical or dental appointment	PM	15/05/2024
Illness Not Medical or dental appointment	PM	14/05/2024
Reason	Sessions	
Illness Not Medical or dental appointment	5	
Total	5	

Student	Year Group
Monday	100.00% / 97.80%
Tuesday	100.00% / 97.85%
Wednesday	100.00% / 98.05%
Thursday	100.00% / 97.95%
Friday	100.00% / 96.82%

Attendance Streaks (Days): 15/04/2024 → 07/05/2024, Current: 16, Best: 137, 26/01/2023 → 13/11/2023

Suspensions

Total Attendance %

Year	Attendance %
2022/23	96.93%
2023/24	94.65%

Attendance % By Day of Week

Year Group	Attendance %
97.80%	
97.85%	
98.05%	
97.95%	
96.82%	

Attendance Streaks (Days): 15/04/2024 → 07/05/2024, Current: 16, Best: 137, 26/01/2023 → 13/11/2023

School Trends

Summary Demographics Attendance Behaviour Suspensions

Date Filters: 08/04/2024, 05/06/2024

School Students Overview

Males: 957 (51.26%), Females: 910 (48.74%), Students: 957, Student %: 48.74%, Attendance %: 95.66%

Name & Reg	PP	Attendance
Aaron B - 21	No	94.74%
Aaron B - 50	No	91.23%
Aaron F - 10	Yes	98.25%
Aaron F - VTOF	Yes	98.21%
Aaron J - 9	Yes	100.00%
Total		95.84%

Student Breakdown (SEN Status): No Status Provi... 96.37%, No Status ... 95.75%, N 95.68%

Student Breakdown (Year Group): 9 97.75%, 8 97.37%, 7 96.71%

Pupil Premium: Student Count: 665, Attendance %: 94.53%

Free School Meals: Student Count: 57

Filter Settings: School: Purple Secondary School, Registration: All, House: All, Year Group: All, Gender: All, Pupil Premium: All, SEN Status: All

Group Tracker

Time Frame (A): Term 1 23/24, Comparative Time Frame (B): Term 2 23/24

Hit Rate

Key	Attendance	Behaviour	Achievement
Improved	19	12	22
No Change	14	11	7
Not Improved	2	12	6

Registration Groups	Attendance Rating	Behaviour Rating	Achievement Rating
6WIK	Not Improved	Not Improved	No Change
6OTG	Not Improved	Not Improved	No Change
6PMK	Not Improved	Improved	No Change
6QOQ	Not Improved	Improved	No Change
6REH	Not Improved	Improved	No Change
6SLQ	Not Improved	No Change	No Change
80	No Change	Improved	Not Improved
CCGT	No Change	No Change	Not Improved
LRDI	No Change	Not Improved	Not Improved
NAEI	No Change	Improved	No Change
PLFJ	No Change	Improved	No Change
VFDL	Improved	Improved	Not Improved
VOJO	Improved	Improved	Improved
VTOF	Improved	Improved	Improved
WVEO	Improved	Improved	Improved
ZUGH	Improved	Improved	Improved

Please visit our website for further details



Group Tracker

Time Frame (A): Term 1 23/24, Comparative Time Frame (B): Term 2 23/24

View By (Group Type): Registration Groups

Filter Settings: School: Purple Secondary School, Registration: All, Year Group: All, House: All

Hit Rate

Key	Attendance	Behaviour	Achievement	Suspensions
Improved	19	12	22	20
No Change	14	11	7	6
Not Improved	2	12	6	6

School Attendance By Half Term

Year	Attendance %
2022/23	96.93%
2023/24	94.65%

Pricing

We work alongside our partner schools to provide a full cost benefit analysis, including calculating the teaching cost, to provide a full Inclusion Centre cost break down. This allows us to structure KPI's related to the reduction of AP placement and PX spend, to ensure the provision is budget friendly, and in some case creating an overall cost saving for your school and/or trust.

On average we generate our schools an annual cost saving of £80,000-£120,000!

1

10 - 15
Students

TFTF
Manager

TFTF
Mentor

TFTF
Mentor

£148,917 per AY

2

15 - 20
Students

TFTF
Manager

TFTF
Deputy
Manager

TFTF
Mentor

TFTF
Mentor

£197,353 per AY

3

20-25
Students

TFTF
Manager

TFTF
Deputy
Manager

TFTF
Mentor

TFTF
Mentor

TFTF
Mentor

£245,789 per AY



Get in touch

Interested in learning more about how our Inclusion Centre Provision can support your school?

Get in touch with our Inclusion Centre Team using the details below:

We are happy to:

- Arrange a virtual/in-person meeting to discuss your school's requirements in more depth
- Arrange a 30 minute summary presentation to SLT
- Share case studies from partner schools, including impact achieved
- Work with you to design a proposal for our work with your school



0115 718 0399



contact@thinkforthefuture.co.uk



@TFTFuture



0115 718 0399



contact@thinkforthefuture.co.uk



www.thinkforthefuture.co.uk



Think for the Future Centre, 81 Sherwin Road,
Nottingham, NG7 2FB